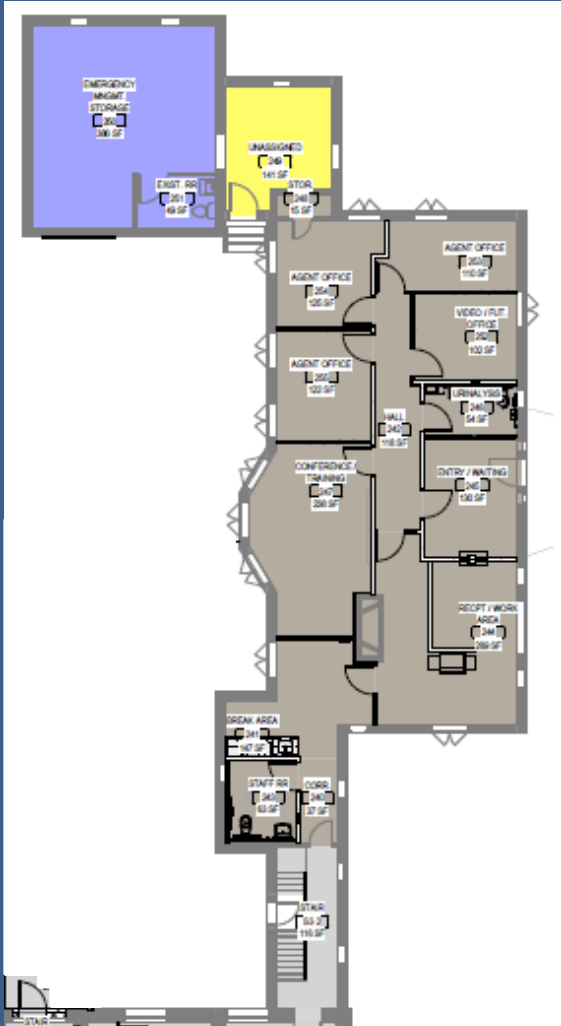


# Project Update

Courthouse and Carbon Building Improvement Project

## COURTHOUSE – ANNEX



### Courthouse Annex

The Annex is a one-story addition to the Courthouse that is located at the northeast corner of the building. When this was added, great care was taken to coordinate the brick look to blend with the adjacent Courthouse.

This addition served as the Sheriff’s residence prior to being used as the Sheriff’s Office. The original fireplace is going to be preserved to maintain a little piece of history within this remodeled space. The exterior entry has served the Sheriff’s Office well and was a key feature needed to relocate the Probation and Parole Department to the Courthouse. This will help to facilitate criminal justice services at one facility.

#### Probation and Parole (Dark Gray on the Plan to the Left)

The Probation and Parole remodel will provide:

- Four (4) private offices.
- A reception, work area.
- Private waiting room with external entry, separate from the Courthouse.
- Meeting Room to meet with clients, provide classes or provide space for visiting Probation and Parole Supervisors.
- Urinalysis restroom for clients.
- Staff restroom and break area.
- Storage space.

#### Emergency Management (Purple on the Plan to the Left)

The Emergency Management remodel will provide:

- Large storage space for emergency management equipment that is currently held offsite.

#### Unassigned (Yellow on the Plan to the Left)

The Unassigned remodel will provide:

- Large unassigned office space with external entry.

## Interim Justice Center (Murray Street) Update

- Permit set of plans was provided by the Design Team on July 8<sup>th</sup>.
- County has obtained building permit.
- County is seeking State Fire Marshal Review.
- Demolition is complete.
- New stud framing is underway.

## Historical Information

Additional information about the historical importance of the Courthouse is located on the [Wyoming State Historic Preservation Office Website](#). The Courthouse is located in the Downtown Rawlins Historic District (Building No 44).

